

## PROBE CUTTERHEAD SETTING STAND

Cutterhead set-up devise with interchangeable arbors and digital readout on probe.  
 Makes proper knife set-up fast, easy and accurate.

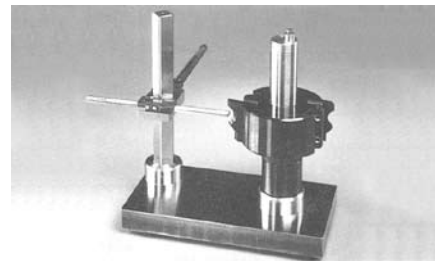
- Capacity 9" head length x 6.30" diameter (160 mm swing)

Part #	Description
CASS1025	Probe Setting Stand with 1 arbor*

\*State Arbor Size Required when ordering.

Available Arbors sizes include:

1-1/4", 35mm, 1-1/2", 40mm, 1-13/16", 50mm, 2-1/8"



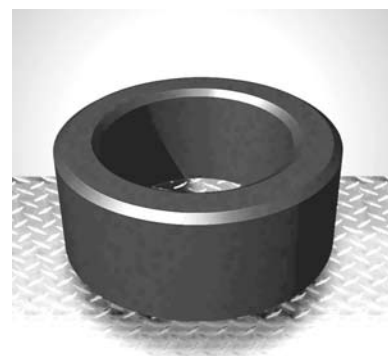
## SPINDLE SPACERS

### Bore for 40mm spindle

Part #	Thickness
SMP40005	5 mm
SMP40010	10 mm
SMP40015	15 mm
SMP40020	20 mm
SMP40025	25 mm
SMP40050	50 mm

### Bore for 1-13/16" spindle

Part #	Thickness
SIP46005	5 mm
SIP46010	10 mm
SIP46015	15 mm
SIP46020	20 mm
SIP46025	25 mm
SIP46050	50 mm



Spacers to fit other spindle sizes available. Call with your requirements.

## CHIPBREAKER MATERIAL (Nylotron)

Nylotron chipbreaker material is easily machineable and is non-marring.

Part #	Description
GA0144N	3/4 x 12 x 12"

Nylotron Chipbreaker  
 shown below, after machining.



Custom Chipbreakers are  
 also available.

## FELT PRESSURE SHOES

### For Thru-Feed and Push Feed Moulders

#### GENERAL DESCRIPTION:

- Felt is impregnated with a special density compound to hold the work piece
- Won't leave a residue on the material
- Does not leave "shine marks" like many other shoes often do
- Attaches with polyurethane glue, Locktite™ 330 or Rocksett to the movable guides or pressure shoe plates on your moulder
- Machinable material; use a reverse profile knife, run through moulder for an exact fit
- Sand or plane to renew the surface

Product Number	Description	Size	Mounted Option
FELTSHOE-2	Felt Pressure Shoe	5/8 x 2 x 35-3/4"	
FELTSHOE-2AL	Felt Pressure Shoe	5/8 x 2 x 35-3/4"	on 1/4" aluminum
FELTSHOE-3	Felt Pressure Shoe	5/8 x 3 x 35-3/4"	
FELTSHOE-3AL	Felt Pressure Shoe	5/8 x 3 x 35-3/4"	on 1/4" aluminum
FELTSHOE-4	Felt Pressure Shoe	5/8 x 4 x 35-3/4"	
FELTSHOE-4AL	Felt Pressure Shoe	5/8 x 4 x 35-3/4"	on 1/4" aluminum

