



CMT POCKET PRO JOINERY SYSTEM

Pocket-Pro™ Joinery System



Think you know pocket hole jigs? Not unless you know the Pocket-Pro! For fast, easy and accurate cabinet & furniture construction, there's never been a tool like the Pocket-Pro™ Joinery System. This new system lets you make rock-solid pocket hole joints in stock from 1/2" to 1-5/8" thick, with unprecedented speed and accuracy.

The Deluxe system is designed to work with the CMT Router Table's Phenolic top and includes the molded jig, an 11-3/4" x 14-3/4" phenolic base, toggle clamp, face clamp, two step drill bits, stop collar, two drivers, sample screws, molded case & our full color instruction book.

CMT-PPJ-001	Pocket Pro Deluxe Joinery System
CMT-PPJ-002	Pocket Pro Starter Joinery System

Other NEW Innovative products from CMT!



ENLOCK 1 Joining System



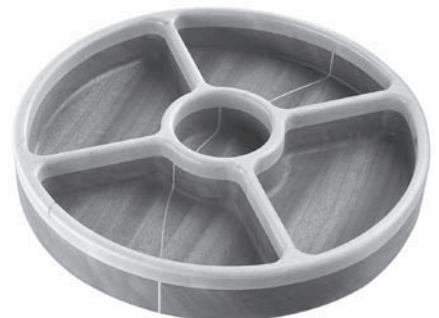
CMT-RCS 3-D Router Carver System



DAF-001 Digital Angle Finder



DAG-01 Digital Angle Gauge



BTS-001 Bowl & Tray System